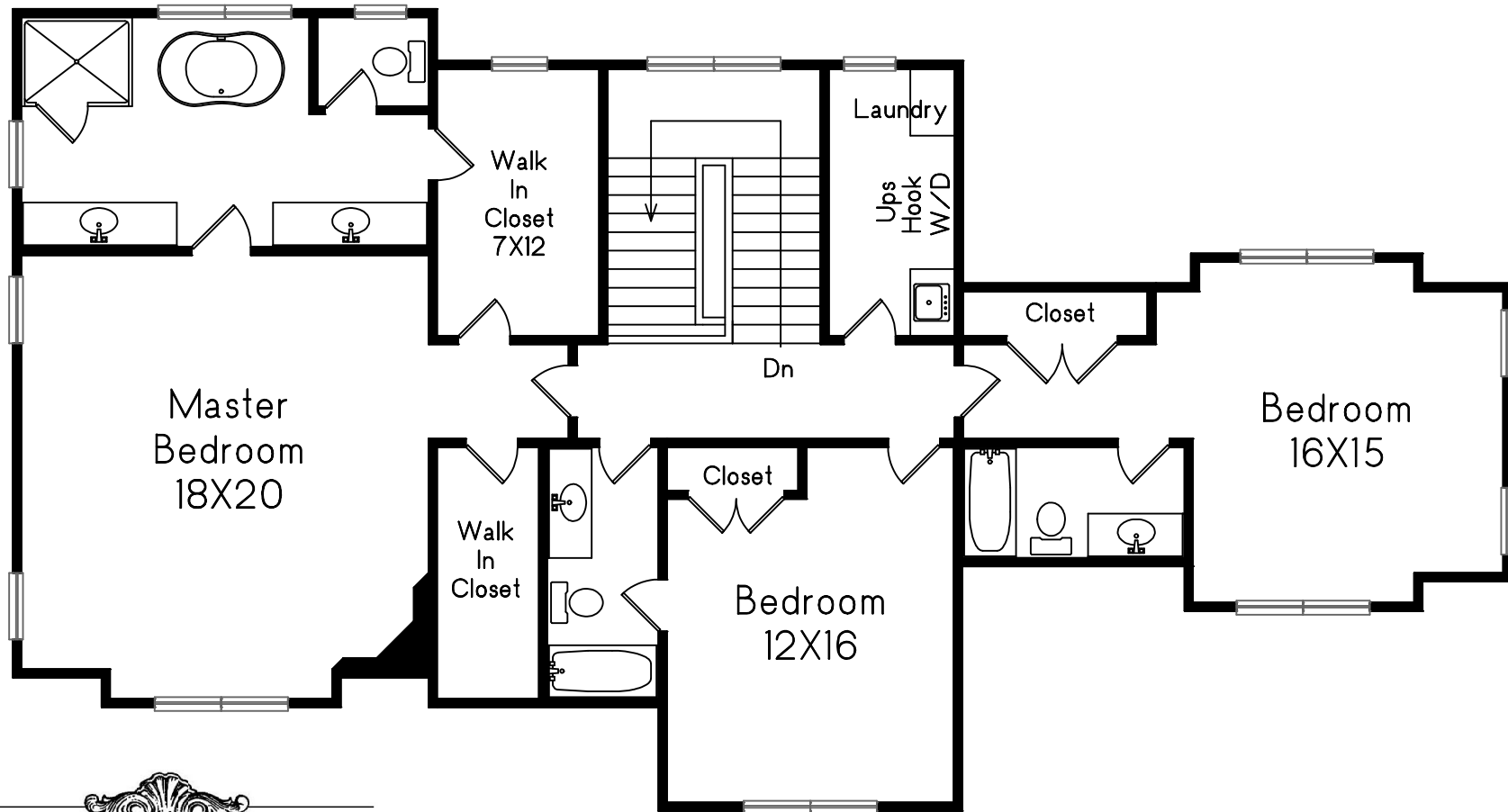


30 Aston Road Chestnut Hill, MA

Second Floor



HISTORIC HOMES
Representing Fine Estate Properties

This drawing is an artistic rendering intended for marketing purposes only. The dimensions and/or square footage are approximate and should be verified by an independent source. This drawing is copyright protected and therefore licensed for use by those named on the floor plan.

Prepared for Historic Homes, Inc.
Miceál and Conor Chamberlain

C Carol Meyer
M 781-455-8100
Copyright 2018