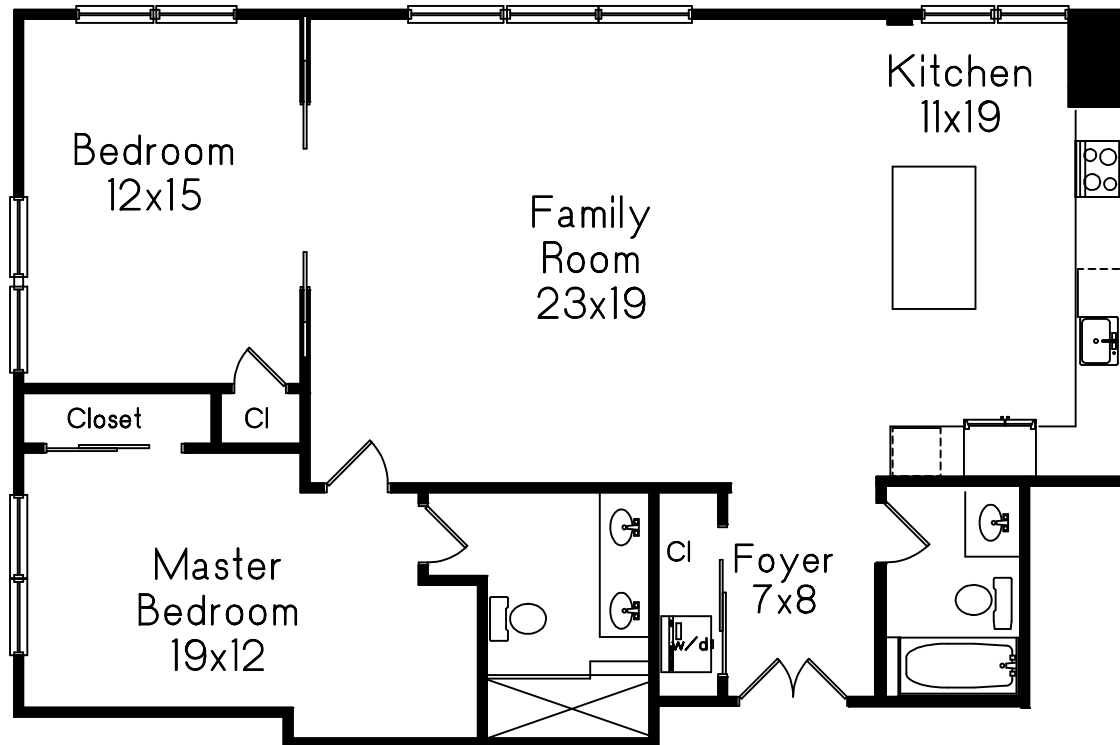


485 Harrison Avenue
Unit 509
Boston, Massachusetts



Prepared for Conor Chamberlain
Historic Homes Boston

C
M Carol Meyer
781-455-8100
Copyright 2018

This drawing is an artistic rendering intended for marketing purposes only. The dimensions and/or square footage are approximate and should be verified by an independent source. This drawing is copyright protected and therefore licensed for use by those named on the floor plan.